

MON	Year 1	Year 2	Year 3	Year 4
9.55 – 10.20	Morning Tea	Morning Tea	Morning Tea	Morning Tea
10.20 – 11.10	BS121 NT 1 (Gospels) (MLH) TH	BS215 OT 2 (KLT) GA	CT300 Doctrine 3 (NJR) DAH/MEE	CT403 Atonement (FBR) LJW/MDT
11.15 – 12.05	BS121 NT 1 (Gospels) (MLH) TH	BS215 OT 2 (KLT) GA	CT300 Doctrine 3 (NJR) DAH/MEE	CT403 Atonement (FBR) LJW/MDT
12.10 – 1.00	BS121 NT 1 (Gospels) (MLH) TH	Lunch	Lunch	BS400 Daniel (FBR) PRW
1.05 – 1.55	Lunch		BS321 NT 3 (NJR) LJW	Lunch
TUE				
8.05 – 8.55	BS102 Greek 1A (KLT) TH CM130 Leadership (MLH) SAA		BS321 NT 3 (NJR) LJW	
9.05 – 9.55	Joint Chapel	Joint Chapel	Joint Chapel	Joint Chapel
9.55 – 10.20	Morning Tea	Morning Tea	Morning Tea	Morning Tea
10.20 – 11.10	CM130 Leadership (MLH) SAA BS106 Heb 1A (LWR) AGS	BS200 Heb 2 (KLT) DYW BS203 TOTE A (BSR-A) PRW	CM302 M&M 3 (NJR) SJG	CT413 KnwTrueGod (FBR) DAH
11.15 – 12.05	BS141 Biblical Theology (MLH) MDJ	BS201 Greek 2 (KLT) PHK/TH	CM302 M&M 3 (NJR) SJG	BS412 OT 4 (Heb) (FBR) GA
12.10 – 1.00	BS141 Biblical Theology (MLH) MDJ	Lunch	Lunch	BS412 OT 4 (Heb) (FBR) GA
1.05 – 1.55	Lunch		CT300 Doctrine 3 (NJR) DAH/MEE	Lunch
2.00 – 2.50	<i>Darlington Scripture</i>	<i>Darlington Scripture</i>	<i>Darlington Scripture</i>	<i>Darlington Scripture</i>
WED				
8.05 – 8.55	CT125 Overview of CH (WHAB) SJG BS106 Heb 1A (LWR) AGS	BS200 Heb 2 (KLT) DYW BS203 TOTE A (BSR-A) PRW	BS321 NT 3 (NJR) LJW	
9.05 – 9.55	Chapel	Chapel	Chapel	Chapel
9.55 – 10.20	Morning Tea	Morning Tea	Morning Tea	Morning Tea
10.20 – 11.10	CT111 Thinking Theol. (MLH) TJP/DAH CT125 Overview of CH (WHAB) SJG	BS215 OT 2 (KLT) GA	CT322 CH B (NJR) MEE	CM402 M&M 4 (FBR) APP/KB
11.15 – 12.05	CT111 Thinking Theol. (MLH) TJP/DAH CT125 Overview of CH (WHAB) SJG	BS215 OT 2 (KLT) GA	CT322 CH B (NJR) MEE	CM402 M&M 4 (FBR) APP/KB
12.10 – 1.00	BS102 Greek 1A (KLT) TH	Lunch	Lunch	BS421 NT 4 (FBR) PHK
1.05 – 1.55	Lunch			Lunch
THU				
8.05 – 8.55			CT322 CH B (NJR) MEE	
9.05 – 9.55	Chaplaincy Groups	Chaplaincy Groups	Chaplaincy Groups	Chaplaincy Groups
9.55 – 10.20	Morning Tea	Morning Tea	Morning Tea	Morning Tea
10.20 – 11.10	BS121 NT 1 (Exegesis) (MLH) LJW	BS201 Greek 2 (KLT) PHK/TH	CM335 IMR-B (NJR) PSG/APP/SAA/SJG/VJH/MBY	CT413 KnwTrueGod (FBR) DAH
11.15 – 12.05	BS121 NT 1 (Exegesis) (MLH) LJW	BS215 OT 2 (KLT) GA	CM335 IMR-B (NJR) PSG/APP/SAA/SJG/VJH/MBY	CT413 KnwTrueGod (FBR) DAH
12.10 – 1.00	BS121 NT 1 (Exegesis) (MLH) LJW	Lunch	Lunch	
1.05 – 1.55	Lunch			Lunch
2.00 – 2.50	<i>North Newtown Scripture</i>	<i>North Newtown Scripture</i>	<i>North Newtown Scripture</i>	<i>North Newtown Scripture</i>
FRI				
8.05 – 8.55	BS102 Greek 1A (KLT) TH	BS200 Heb 2 (LWR) DYW BS203 TOTE A (BSR-A) PRW	CT300 Doctrine 3 (NJR) DAH/MEE	CT400/CT590 iIT (FBR) AML (1 wk)
9.05 – 9.55	Joint Chapel	Joint Chapel	Joint Chapel	Joint Chapel
9.55 – 10.20	Morning Tea	Morning Tea	Morning Tea	Morning Tea
10.20 – 11.10	CM153 CCCC (MLH) SJG/SAA CM182 ACW (WHAB) VJH	CT222 CH A (KLT) MEE	BS321 NT 3 (NJR) LJW	CT400/CT590 iIT (FBR) AML (1 wk)
11.15 – 12.05	CM153 CCCC (MLH) SJG/SAA CM182 ACW (WHAB) VJH BS106 Heb 1A (LWR) AGS	CT222 CH A (KLT) MEE		CT420/CT585 CH 4 (FBR) EAL
12.10 – 1.00	Orientation & Integration (MLH)	Lunch	Lunch	CT420/CT585 CH 4 (FBR) EAL
1.05 – 1.55	Lunch			Lunch

Orientation Wk 1: BS102 Greek 1A 4–7 Feb (FBR & WHABC) TH/ATC
Intensive block 1: CM102 M&M 1 10–14 Feb (MLH) PSG // BS102 Greek 1A 10–14 Feb (FBR & WHABC) TH // BS200 Heb 2 (BSR-A) DYW & BS203 TOTE A 10–14 Feb (KLT) PRW // BS201 Greek 2 11–13 Feb (KLT) PHK/TH // BS321/BS315 NT/OT 3 11–14 Feb (LWR) PHK/LJW // CT200 Doct 2 10–14 Feb (BSR-A) MDT/CRC // CM412/CM508 AIL 10–14 Feb (NJR) APP/MEE
Block 2: CM102 M&M 1 Block 2 1,2,4 Apr (KLT) PSG // CT200 Doct 2 1,2,4 Apr (MLH) DAH

Semester 1 Evening Classes:

Tues 6.30 – 9.30pm BS111 OT 1 (FBR) AGS
 Thurs 6.30 – 8.30pm CM153 CCCC (FBR) SAA, SJG

GradCertMD: Classes are 10am–5pm unless otherwise stated

CM544 Pastoral Supervision B 26 – 28 Mar (BSR - A) APP/SB

MON	Year 1	Year 2	Year 3	Year 4
9.55 – 10.20	Morning Tea	Morning Tea	Morning Tea	Morning Tea
10.20 – 11.10	BS121 NT 1 (Heb - Rev) (MLH) MDJ	CM293 Prac A (KLT) MBY/APP (Wk 1 only)	BS315 OT 3 (NJR) DYW	CT403 Atonement (FBR) LJW/MDT
11.15 – 12.05	BS121 NT 1 (Heb - Rev) (MLH) MDJ	CM293 Prac A (KLT) MBY/APP (Wk 1 only)	BS315 OT 3 (NJR) DYW	CT403 Atonement (FBR) LJW/MDT
12.10 – 1.00	BS121 NT 1 (Heb - Rev) (MLH) MDJ	Lunch	Lunch	BS400 Daniel (FBR) PRW
1.05 – 1.55	Lunch		CT330 Moral Theol (NJR) TJP/CRC	Lunch
TUE				
8.05 – 8.55	BS102 Greek 1A (KLT) TH CM130 Leadership (WHAB) SAA	BS200 Heb 2 (BSR-A) GA BS203 TOTE A (LWR) PRW	CT330 Moral Theol (NJR) TJP/CRC	
9.05 – 9.55	Joint Chapel	Joint Chapel	Joint Chapel	Joint Chapel
9.55 – 10.20	Morning Tea	Morning Tea	Morning Tea	Morning Tea
10.20 – 11.10	CM130 Leadership (WHAB) SAA BS106 Heb 1A (LWR) AGS	BS221 NT 2 (KLT) PHK/TH	CM302 M&M 3 (NJR) SJG/VJH	BS412 OT 4 (Heb) (FBR) GA
11.15 – 12.05	BS141 Biblical Theology (MLH) MDJ	BS201 Greek 2 (KLT) PHK/TH	CM302 M&M 3 (NJR) SJG/VJH	BS412 OT 4 (Heb) (FBR) GA
12.10 – 1.00	BS141 Biblical Theology (MLH) MDJ	Lunch	Lunch	CT413 KnwTrueGod (FBR) DAH
1.05 – 1.55	Lunch		CT322 CH B (NJR) MEE	Lunch
2.00 – 2.50	<i>Darlington Scripture</i>	<i>Darlington Scripture</i>	<i>Darlington Scripture</i>	<i>Darlington Scripture</i>
WED				
8.05 – 8.55	CT125 Overview of CH (WHAB) SJG/VJH/PP BS106 Heb 1A (LWR) AGS		BS315 OT 3 (NJR) DYW	
9.05 – 9.55	Chapel	Chapel	Chapel	Chapel
9.55 – 10.20	Morning Tea	Morning Tea	Morning Tea	Morning Tea
10.20 – 11.10	CT111 Thinking Theol. (MLH) TJP/DAH CT125 Overview of CH (WHAB) SJG/VJH/PP	BS221 NT 2 (KLT) PHK/TH	BS315 OT 3 (NJR) DYW	CM402 M&M 4 (FBR) APP
11.15 – 12.05	CT111 Thinking Theol. (MLH) DAH/ TJP CT125 Overview of CH (WHAB) SJG/VJH/PP	BS221 NT 2 (KLT) PHK/TH	CT322 CH B (NJR) MEE	CM402 M&M 4 (FBR) APP
12.10 – 1.00	BS102 Greek 1A (KLT) TH	Lunch	Lunch	
1.05 – 1.55	Lunch	BS200 Heb 2 (KLT) GA BS203 TOTE A (BSR-A) PRW	CT322 CH B (NJR) MEE	Lunch
THU				
8.05 – 8.55		BS221 NT 2 (KLT) PHK/TH		
9.05 – 9.55	Chaplaincy Groups	Chaplaincy Groups	Chaplaincy Groups	Chaplaincy Groups
9.55 – 10.20	Morning Tea	Morning Tea	Morning Tea	Morning Tea
10.20 – 11.10	BS121 NT 1 (Acts/Paul) (MLH) LJW	BS203 TOTE A (LWR) PRW BS200 Heb 2 (KLT) GA	CM335 IMR-B (NJR) PSG/APP/SAA/SJG/VJH/MBY	CT413 KnwTrueGod (FBR) DAH
11.15 – 12.05	BS121 NT 1 (Acts/Paul) (MLH) LJW	BS201 Greek 2 (KLT) PHK/TH	CM335 IMR-B (NJR) PSG/APP/SAA/SJG/VJH/MBY	CT413 KnwTrueGod (FBR) DAH
12.10 – 1.00	BS121 NT 1 (Acts/Paul) (MLH) LJW	Lunch	Lunch	
1.05 – 1.55	Lunch			Lunch
2.00 – 2.50	<i>North Newtown Scripture</i>	<i>North Newtown Scripture</i>	<i>North Newtown Scripture</i>	<i>North Newtown Scripture</i>
FRI				
8.05 – 8.55	BS102 Greek 1A (KLT) TH		BS315 OT 3 (NJR) DYW	
9.05 – 9.55	Joint Chapel	Joint Chapel	Joint Chapel	Joint Chapel
9.55 – 10.20	Morning Tea	Morning Tea	Morning Tea	Morning Tea
10.20 – 11.10	CM153 CCCC (MLH) SJG/SAA CM182 ACW (WHAB) VJH	CT222 CH A (KLT) MEE	CT330 Moral Theol (NJR) TJP/CRC	BS421 NT 4 (FBR) PHK
11.15 – 12.05	CM153 CCCC (MLH) SJG/SAA CM182 ACW (WHAB) VJH BS106 Heb 1A (LWR) AGS	CT222 CH A (KLT) MEE	CT330 Moral Theol (NJR) TJP/CRC	CT420/CT585 CH 4 (FBR) EAL
12.10 – 1.00	Orientation & Integration (MLH)	Lunch	Lunch	CT420/CT585 CH 4 (FBR) EAL
1.05 – 1.55	Lunch			Lunch

Intensives:

CM172 Church, Music and Worship 23–27 June PP/APP

Semester 1 Evening Classes:

Tues 6.30 – 9.30pm BS111 OT 1 (FBR) AGS

Thurs 6.30 – 8.30pm CM153 CCCC (FBR) SAA, SJG

GradCertMD: Classes are 10am-5pm

CM544 Pastoral Supervision B 1 – 2 May (BSR - A) APP/SB

MON	Year 1	Year 2	Year 3	Year 4
9.55 – 10.20	Morning Tea	Morning Tea	Morning Tea	Morning Tea
10.20 – 11.10	BS111 OT 1 (KLT) DYW	CT200 Doctrine 2 (MLH) DAH	CT330 Moral Theol (NJR) TJP	CM430 Preaching (FBR) PSG
11.15 – 12.05	BS111 OT 1 (KLT) DYW	CT200 Doctrine 2 (MLH) DAH	CT330 Moral Theol (NJR) TJP	BS405 ATBGE (WHAB) MDJ
12.10 – 1.00	BS111 OT 1 (KLT) DYW	Lunch	Lunch	BS405 ATBGE (WHAB) MDJ
1.05 – 1.55	Lunch	BS221 NT 2 (LWR) TH/PCO	BS315 OT 3 (NJR) PRW	Lunch
TUE				
8.05 – 8.55	BS103 Greek 1B (KLT) TH	BS204 TOTE B (BSR-A) PRW BS200 Heb 2 (LWR) DYW	CT350 IIT A (NJR) DAH	
9.05 – 9.55	Joint Chapel	Joint Chapel	Joint Chapel	Joint Chapel
9.55 – 10.20	Morning Tea	Morning Tea	Morning Tea	Morning Tea
10.20 – 11.10	CT100 Doctrine 1 (MLH) MDT	BS221 NT 2 (KLT) TH/PCO	CT322 CH B (NJR) MEE	CM430 Preaching (FBR) PSG
11.15 – 12.05	CT100 Doctrine 1 (MLH) MDT	BS221 NT 2 (KLT) TH/PCO	CT322 CH B (NJR) MEE	CM402 M&M 4 (FBR) PSG
12.10 – 1.00	CT100 Doctrine 1 (MLH) MDT	Lunch	Lunch	CM402 M&M 4 (FBR) PSG
1.05 – 1.55	Lunch			Lunch
2.00 – 2.50	<i>Darlington Scripture</i>	<i>Darlington Scripture</i>	<i>Darlington Scripture</i>	<i>Darlington Scripture</i>
WED				
8.05 – 8.55	BS130 BIA (WHAB) TRE		BS321 NT 3 (NJR) PCO	
9.05 – 9.55	Chapel	Chapel	Chapel	Chapel
9.55 – 10.20	Morning Tea	Morning Tea	Morning Tea	Morning Tea
10.20 – 11.10	BS130 BIA (WHAB) TRE BS103 Greek 1B (KLT) TH	CT222 CH A (BSR-A) MEE	BS315 OT 3 (NJR) PRW	CM430 Preaching (FBR) PSG
11.15 – 12.05	CM161 WRAG (MLH) SJG BS107 Heb 1B (LWR) AGS	CT222 CH A (BSR-A) MEE	BS315 OT 3 (NJR) PRW	CT431/CT533 Hermen. (FBR) AML
12.10 – 1.00	CM161 WRAG (MLH) SJG	Lunch	Lunch	CT431/CT533 Hermen. (FBR) AML
1.05 – 1.55	Lunch	BS221 NT 2 (KLT) TH/PCO		Lunch
THU				
8.05 – 8.55	BS107 Heb 1B (LWR) AGS	BS200 Heb 2 (KLT) DYW BS204 TOTE B (BSR-A) PRW	CT322 CH B (NJR) MEE	
9.05 – 9.55	Chaplaincy Groups	Chaplaincy Groups	Chaplaincy Groups	Chaplaincy Groups
9.55 – 10.20	Morning Tea	Morning Tea	Morning Tea	Morning Tea
10.20 – 11.10	BS111 OT 1 (KLT) DYW	CM235 IMR-A (LWR) SAA/VJH/MBY/PSG/SJG	CT330 Moral Theol (NJR) TJP	BS422 NT Christology (FBR) PHK
11.15 – 12.05	BS111 OT 1 (KLT) DYW	CM235 IMR-A (LWR) SAA/VJH/MBY/PSG/SJG	CT330 Moral Theol (NJR) TJP	BS422 NT Christology (FBR) PHK
12.10 – 1.00	BS111 OT 1 (KLT) DYW	Lunch	Lunch	BS400 Daniel (FBR) PRW
1.05 – 1.55	Lunch			Lunch
2.00 – 2.50	<i>North Newtown Scripture</i>	<i>North Newtown Scripture</i>	<i>North Newtown Scripture</i>	<i>North Newtown Scripture</i>
FRI				
8.05 – 8.55	BS103 Greek 1B (KLT) TH		CT350 IIT A (NJR) DAH	
9.05 – 9.55	Joint Chapel	Joint Chapel	Joint Chapel	Joint Chapel
9.55 – 10.20	Morning Tea	Morning Tea	Morning Tea	Morning Tea
10.20 – 11.10	BS107 Heb 1B (LWR) AGS CM183 CWIA (WHAB) VJH	CM202 M&M 2 (MLH) APP/MBY/PSG	BS315 OT 3 (NJR) PRW	BS421 NT 4 (FBR) PCO
11.15 – 12.05	CM183 CWIA (WHAB) VJH	CM202 M&M 2 (MLH) APP/MBY/PSG	BS315 OT 3 (NJR) PRW	CT400/CT590 IIT (FBR/LWR) DAH/TJP/PHK/AGS
12.10 – 1.00	Orientation & Integration (MLH)	Lunch	Lunch	CT400/CT590 IIT (FBR/LWR) DAH/TJP/PHK/AGS
1.05 – 1.55	Lunch			Lunch

Intensives:

Block 3: CM102 M&M 1 Block 3 12-15 Aug (KLT) SJG/SAA
// BS221 NT 2 12 – 15 Aug (MLH) PCO

Semester 2 Evening Classes:

Tues 6.30 – 9.30pm BS111 OT 1 (FBR) AGS
Thurs 6.30 – 8.30pm CM161 WRAG (FBR) SJG

MA(Theol):

BS558 Epistles of Peter (Greek) 23 – 25 July, 9am – 3pm (BSR-B) MDJ
CM521 Engaging with Indigenous Australians 25 – 27 Aug, 12pm – 6pm (LWR) SJG

GradCertMD: Classes are 10am-5pm

CM543 Pastoral Supervision A Dates TBC (BSR - A) APP/SB

MON	Year 1	Year 2	Year 3	Year 4
9.55 – 10.20	Morning Tea	Morning Tea	Morning Tea	Morning Tea
10.20 – 11.10	BS111 OT 1 (MLH) AGS	CM202 M&M 2 (KLT) SAA/PSG	CT350 iit A (NJR) AML/MEE/MDT	BS405 ATBGE (WHAB) MDJ
11.15 – 12.05	BS111 OT 1 (MLH) AGS	CM202 M&M 2 (KLT) SAA/PSG	BS321 NT 3 (NJR) LJW/PCO	BS405 ATBGE (WHAB) MDJ
12.10 – 1.00	BS111 OT 1 (MLH) AGS	Lunch	Lunch	CM430 Preaching (FBR) PSG
1.05 – 1.55	Lunch	CM293 Prac A (MLH) MBY/APP (Wk 4 & 5 only)		Lunch
2.00 – 2.50		CM293 Prac A (MLH) MBY/APP (Wk 4 & 5 only)		
TUE				
8.05 – 8.55	BS107 Heb 1B (LWR) PRW			
9.05 – 9.55	Joint Chapel	Joint Chapel	Joint Chapel	Joint Chapel
9.55 – 10.20	Morning Tea	Morning Tea	Morning Tea	Morning Tea
10.20 – 11.10	CT100 Doctrine 1 (MLH) MDT	BS215 OT 2 (KLT) DYW	CT300 Doctrine 3 (NJR) AML	CM402 M&M 4 (FBR) PSG/KB
11.15 – 12.05	CT100 Doctrine 1 (MLH) MDT	BS215 OT 2 (KLT) DYW	CT300 Doctrine 3 (NJR) AML	CM402 M&M 4 (FBR) PSG/KB
12.10 – 1.00	CT100 Doctrine 1 (MLH) MDT	Lunch	Lunch	BS421 NT 4 (FBR) PCO
1.05 – 1.55	Lunch	BS200 Heb 2 (BSR-A) DYW BS204 TOTE B (NJR) PRW		Lunch
2.00 – 2.50	<i>Darlington Scripture</i>	<i>Darlington Scripture</i>	<i>Darlington Scripture</i>	<i>Darlington Scripture</i>
WED				
8.05 – 8.55	BS130 BIA (WHAB) TRE		BS321 NT 3 (NJR) LJW/PCO	
9.05 – 9.55	Chapel	Chapel	Chapel	Chapel
9.55 – 10.20	Morning Tea	Morning Tea	Morning Tea	Morning Tea
10.20 – 11.10	BS130 BIA (WHAB) TRE BS103 Greek 1B (MLH) TH	BS215 OT 2 (KLT) DYW	CT322 CH B (NJR) MEE	CM430 Preaching (FBR) PSG
11.15 – 12.05	CM161 WRAG (MLH) SJG BS107 Heb 1B (LWR) PRW	BS215 OT 2 (KLT) DYW	CT322 CH B (NJR) MEE	CT431/CT533 Hermen. (FBR) AML
12.10 – 1.00	CM161 WRAG (MLH) SJG	Lunch	Lunch	CT431/CT533 Hermen. (FBR) AML
1.05 – 1.55	Lunch			Lunch
THU				
8.05 – 8.55	BS103 Greek 1B (KLT) TH	BS204 TOTE B (LWR) PRW BS200 Heb 2 (BSR-A) DYW	BS321 NT 3 (NJR) LJW/PCO	
9.05 – 9.55	Chaplaincy Groups	Chaplaincy Groups	Chaplaincy Groups	Chaplaincy Groups
9.55 – 10.20	Morning Tea	Morning Tea	Morning Tea	Morning Tea
10.20 – 11.10	BS111 OT 1 (KLT) AGS	CM235 IMR-A (LWR) SAA/VJH/MBY/PSG/SJG	CT300 Doctrine 3 (MLH) AML	BS422 NT Christology (FBR) PHK
11.15 – 12.05	BS111 OT 1 (KLT) AGS	CM235 IMR-A (LWR) SAA/VJH/MBY/PSG/SJG	CT300 Doctrine 3 (MLH) AML	BS422 NT Christology (FBR) PHK
12.10 – 1.00	BS111 OT 1 (KLT) AGS	Lunch	Lunch	BS400 Daniel (FBR) PRW
1.05 – 1.55	Lunch			Lunch
2.00 – 2.50	<i>North Newtown Scripture</i>	<i>North Newtown Scripture</i>	<i>North Newtown Scripture</i>	<i>North Newtown Scripture</i>
FRI				
8.05 – 8.55	BS103 Greek 1B (KLT) TH	BS215 OT 2 (LWR) DYW	CT350 iit A (NJR) AML/MEE/MDT	
9.05 – 9.55	Joint Chapel	Joint Chapel	Joint Chapel	Joint Chapel
9.55 – 10.20	Morning Tea	Morning Tea	Morning Tea	Morning Tea
10.20 – 11.10	CM183 CWIA (WHAB) VJH BS107 Heb 1B (LWR) PRW	CT200 Doctrine 2 (KLT) PFJ	CT322 CH B (NJR) MEE	CM430 Preaching (FBR) PSG
11.15 – 12.05	CM183 CWIA (WHAB) VJH	CT200 Doctrine 2 (KLT) PFJ	BS321 NT 3 (NJR) LJW/PCO	CT400/CT590 iit (FBR/LWR) AML/TJP/PRW/PHK
12.10 – 1.00	Orientation & Integration (MLH)	Lunch	Lunch	CT400/CT590 iit (FBR/LWR) AML/TJP/PRW/PHK
1.05 – 1.55	Lunch			Lunch

Intensives:

Block 4: CM102 M&M 1 13-17 Oct (MLH) // CM202 M&M2 13-17 Oct (KLT) PSG/TH

Semester 2 Evening Classes:

Tues 6.30 – 9.30pm BS111 OT 1 (FBR) AGS
Thurs 6.30 – 8.30pm CM161 WRAG (FBR) SJG

MA(Theol):

BS558 Epistles of Peter (Greek) 23 – 25 Sept, 9am – 3pm (BSR-B) MDJ
CM521 Engaging with Indigenous Australians 27 – 29 Oct, 12pm – 6pm (LWR) SJG

GradCertMD: Classes are 10am-5pm

CM543 Pastoral Supervision A Dates TBC (BSR - A) APP/SB

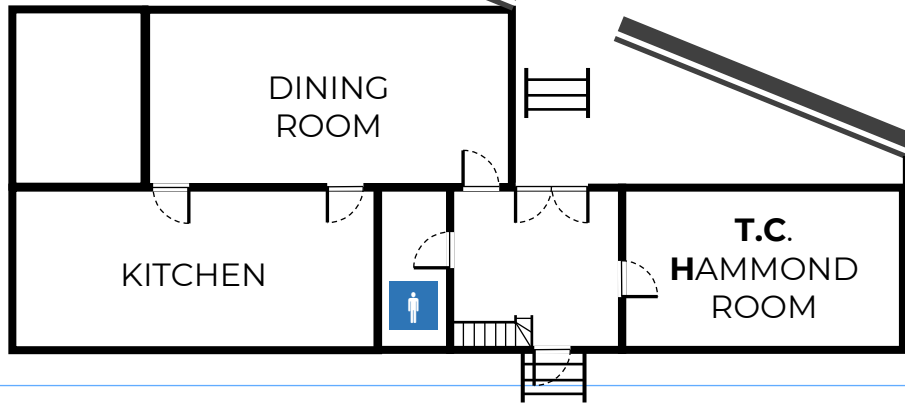
Key to Rooms

Abbreviation	Room	Building
AMP	Amphitheatre	Lower level of the Donald Robinson Library
BSR – A	Bernard Schleicher Room – A	Dining Room Building – Level 1 (room near stairs)
BSR–B	Bernard Schleicher Room – B	Dining Room Building – Level 1 (far end room) Enter via balcony
CCR	Cowper Common Room	19 King Street – Level 1
FBR	Frederic Barker Room	1 King Street – Level 1
KNA	Knox Annexe	Knox Building – Ground floor
KNC	Knox Common Room	Knox Building – Ground floor
KLT	Knox Lecture Theatre	Knox Building – Level 1
LWR	Lukyn Williams Room	Knox Building – Ground floor
MBR	Marcus Brownrigg Room	19 King Street – Level 1
MLH	Marcus Loane Hall	1 King Street – Ground floor
NJR	Nathaniel Jones Room	Knox Building – Level 1
RMR	Rachel Moore Room	19 King Street – Level 2
RJR	Richard Johnson Room	19 King Street – Level 2
RKR	Robert King Room	Knox Building – Mezzanine
SMR	Samuel Marsden Room	19 King Street – Level 2
STM	Stanley Mitchell Room	19 King Street – Level 1
THR	TC Hammond Room	Dining Room Building – Ground floor
TKR	Thomas Kemmis Room	19 King Street – Level 1
TMR	Thomas Moore Room	19 King Street – Level 2
WHA	William Hodgson Room A	1 King Street – Level 1
WHB	William Hodgson Room B	1 King Street – Level 1
WHC	William Hodgson Room C	1 King Street – Level 1

Version: 23 December 2024

DINING COMPLEX

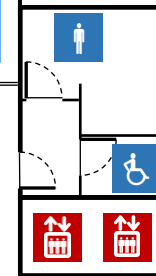
youthworks college (LOWER FLOOR)



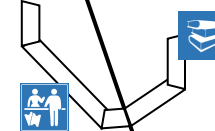
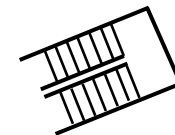
GROUND FLOOR

CARILLON AVE

1 KING



DONALD ROBINSON LIBRARY



KING ST

MARCUS LOANE HALL

KNOX ANNEX

COURTYARD

GRAPE VINE

KNOX COMMON ROOM

LUKYN WILLIAMS ROOM

MAILROOM

KNOX CENTRE (DBK)

MOORE THEOLOGICAL COLLEGE CAMPUS MAP

matthiasmedia

19 KING

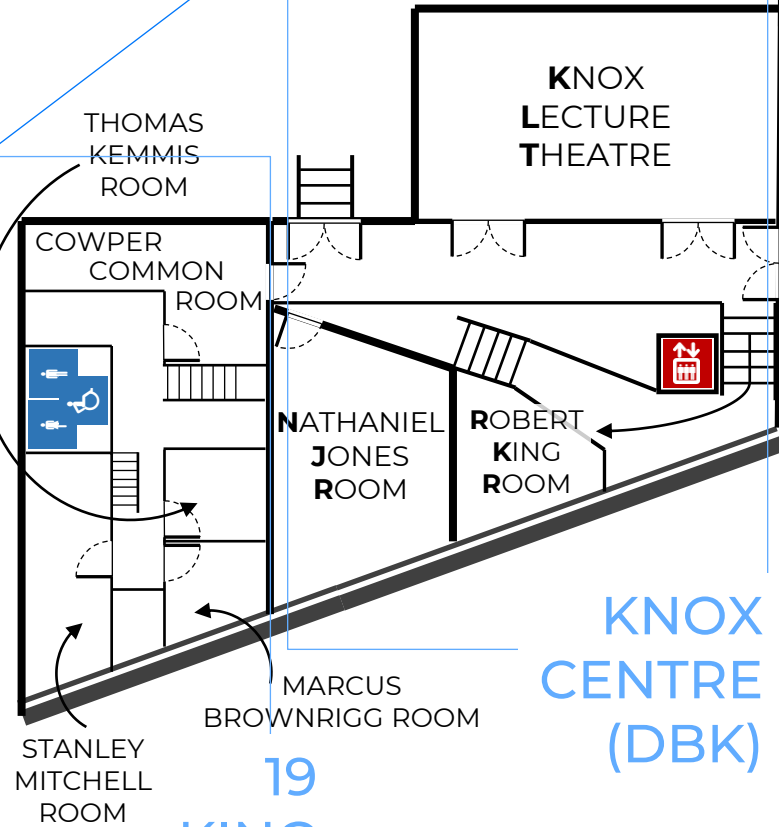
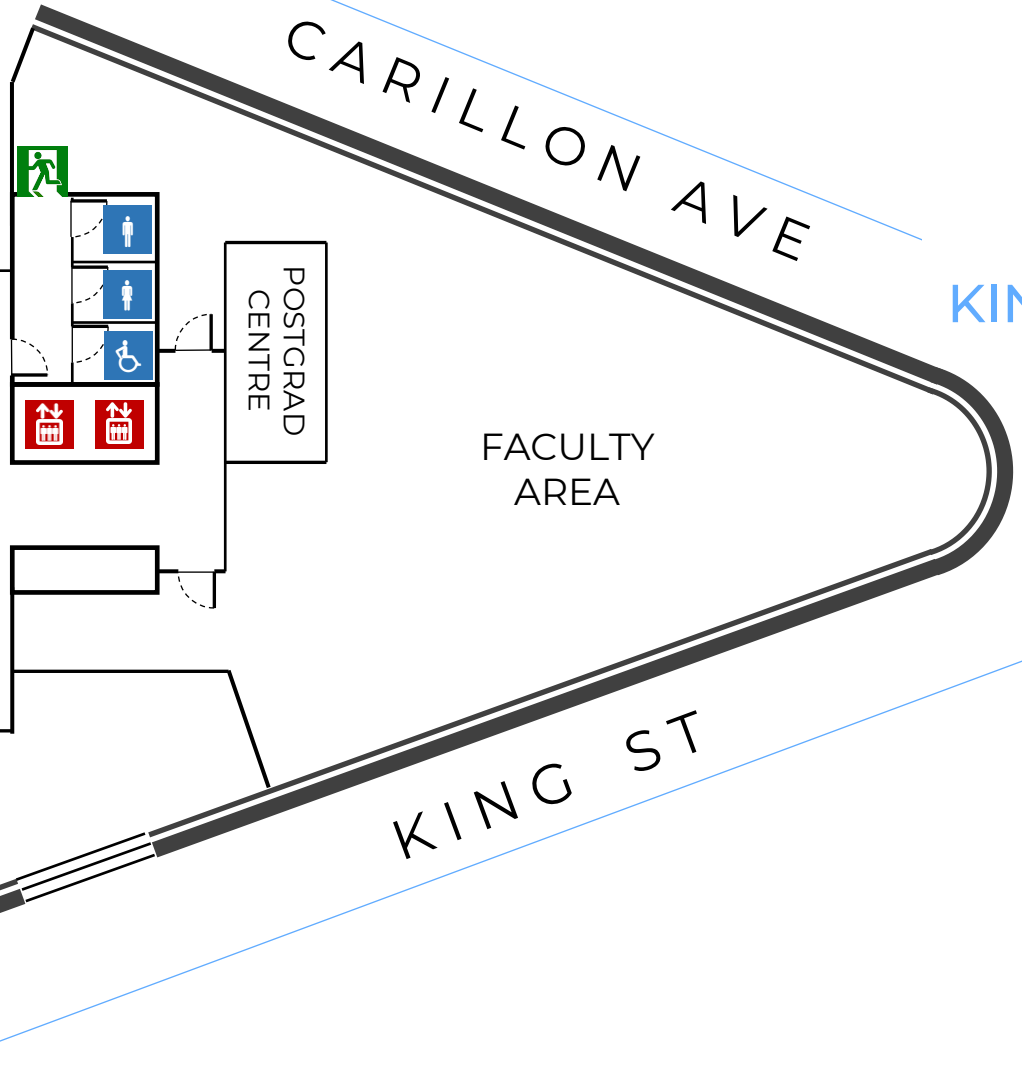
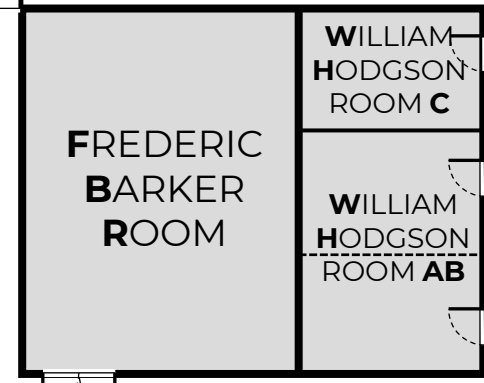
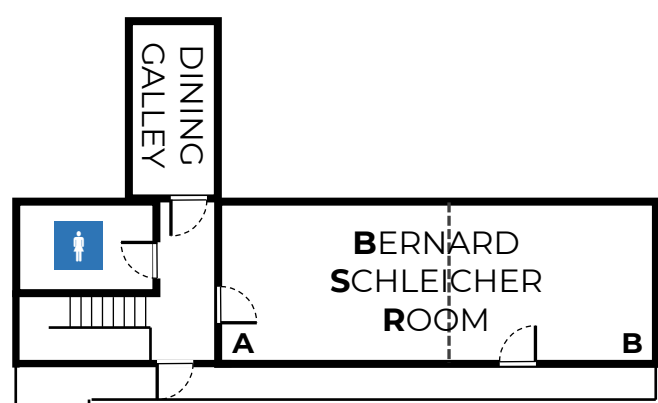
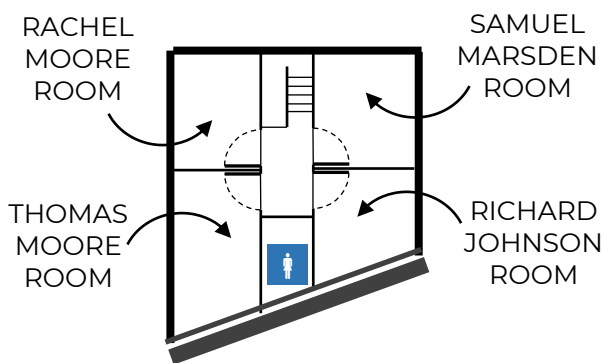
TwoWays Ministries



DINING
COMPLEX

LEVEL ONE

LEVEL TWO



KNOX CENTRE (DBK)

19 KING

**MOORE THEOLOGICAL COLLEGE
CAMPUS MAP**

1 KING